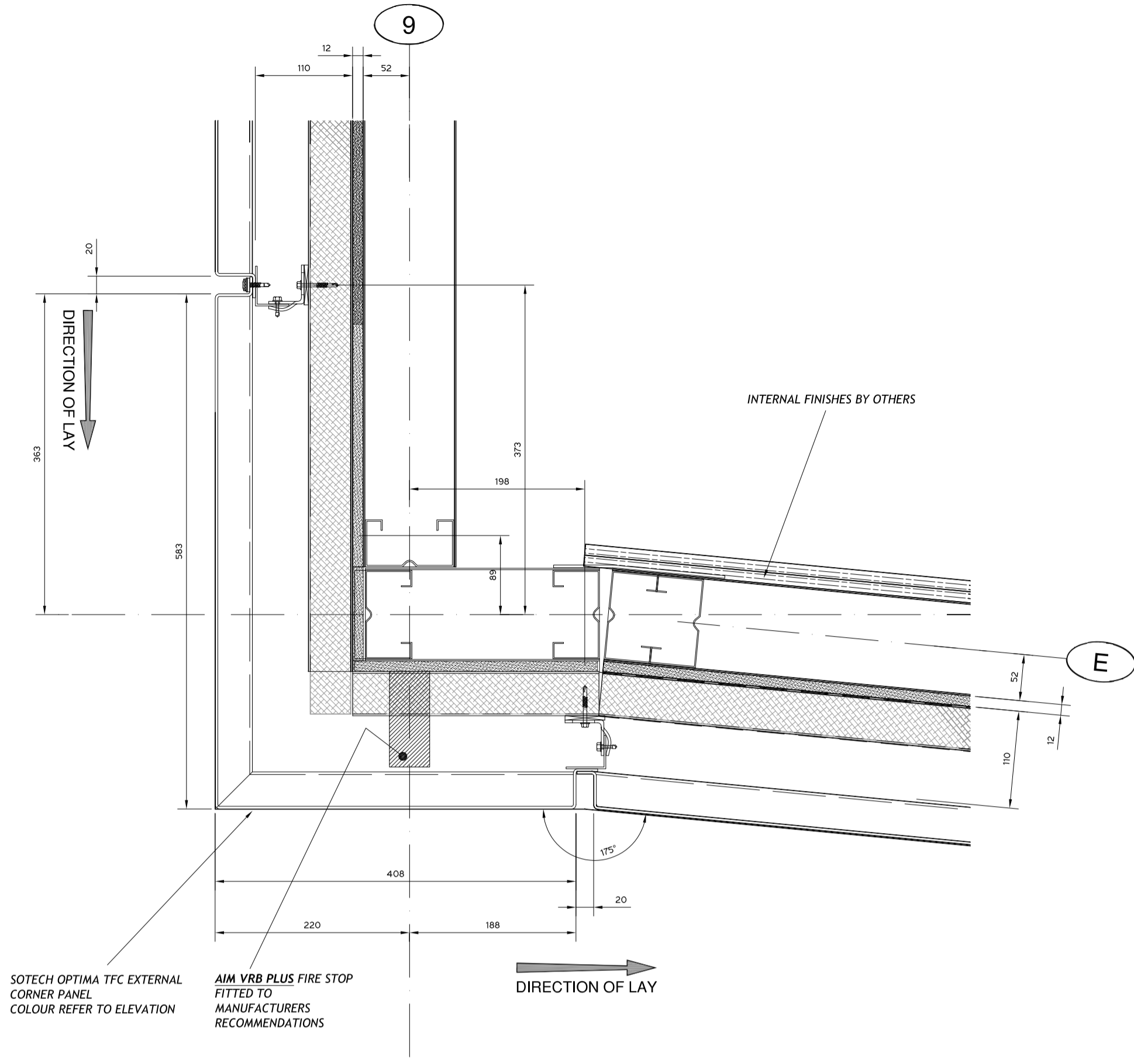
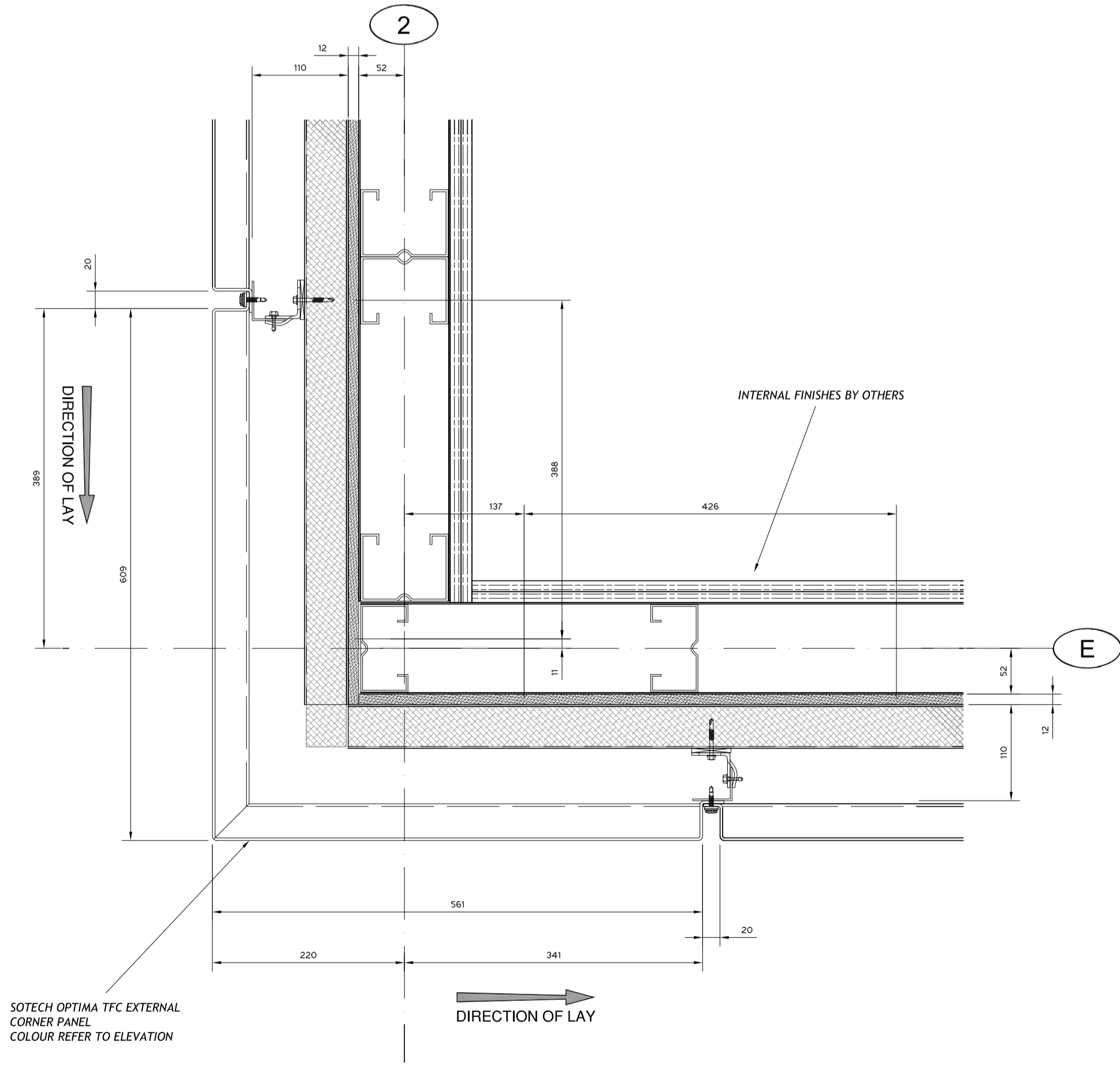


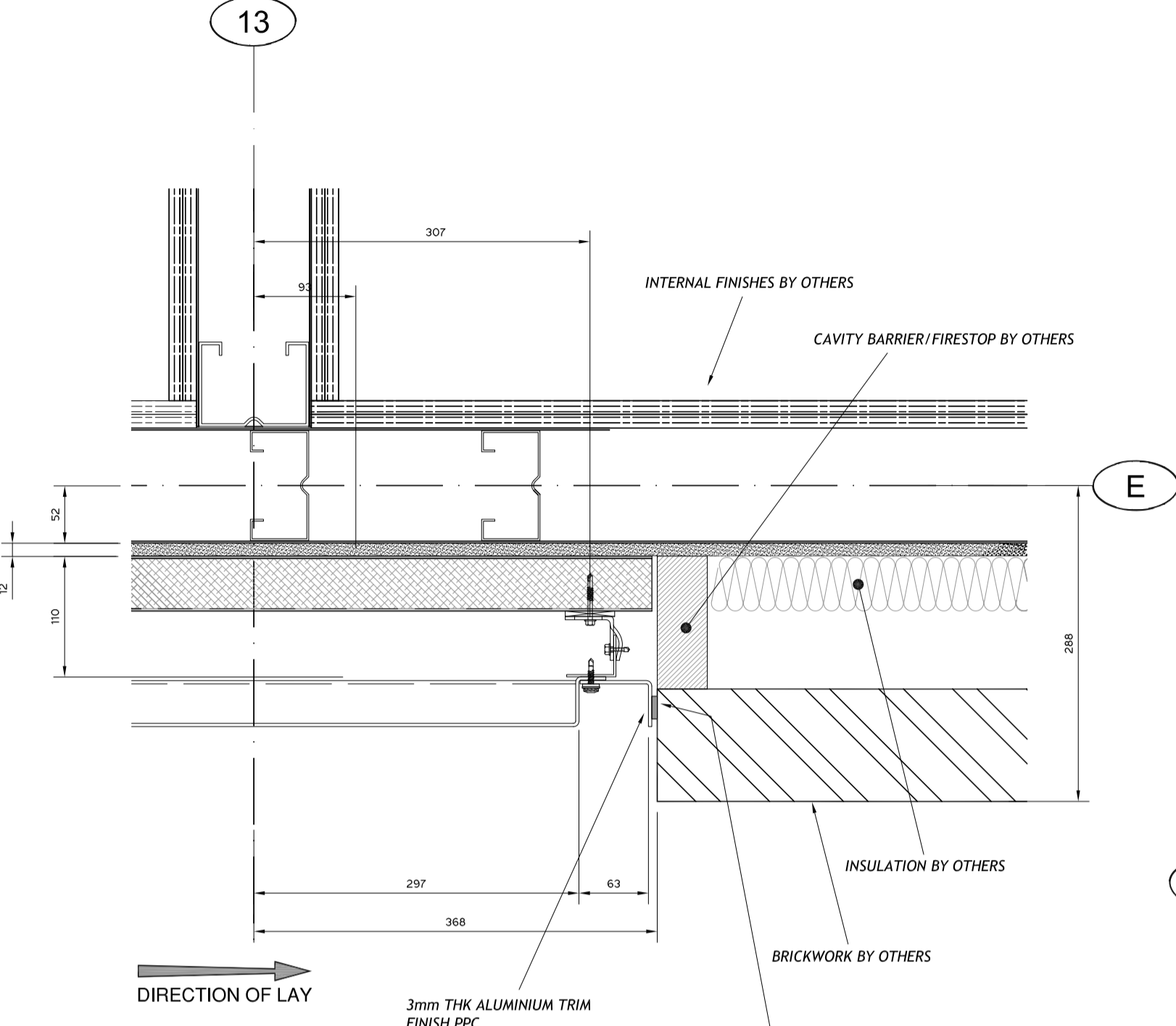
PVC BARRIER TAPE BETWEEN ALL STEEL & ALUMINIUM TO AVOID BIMETALLIC CORROSION



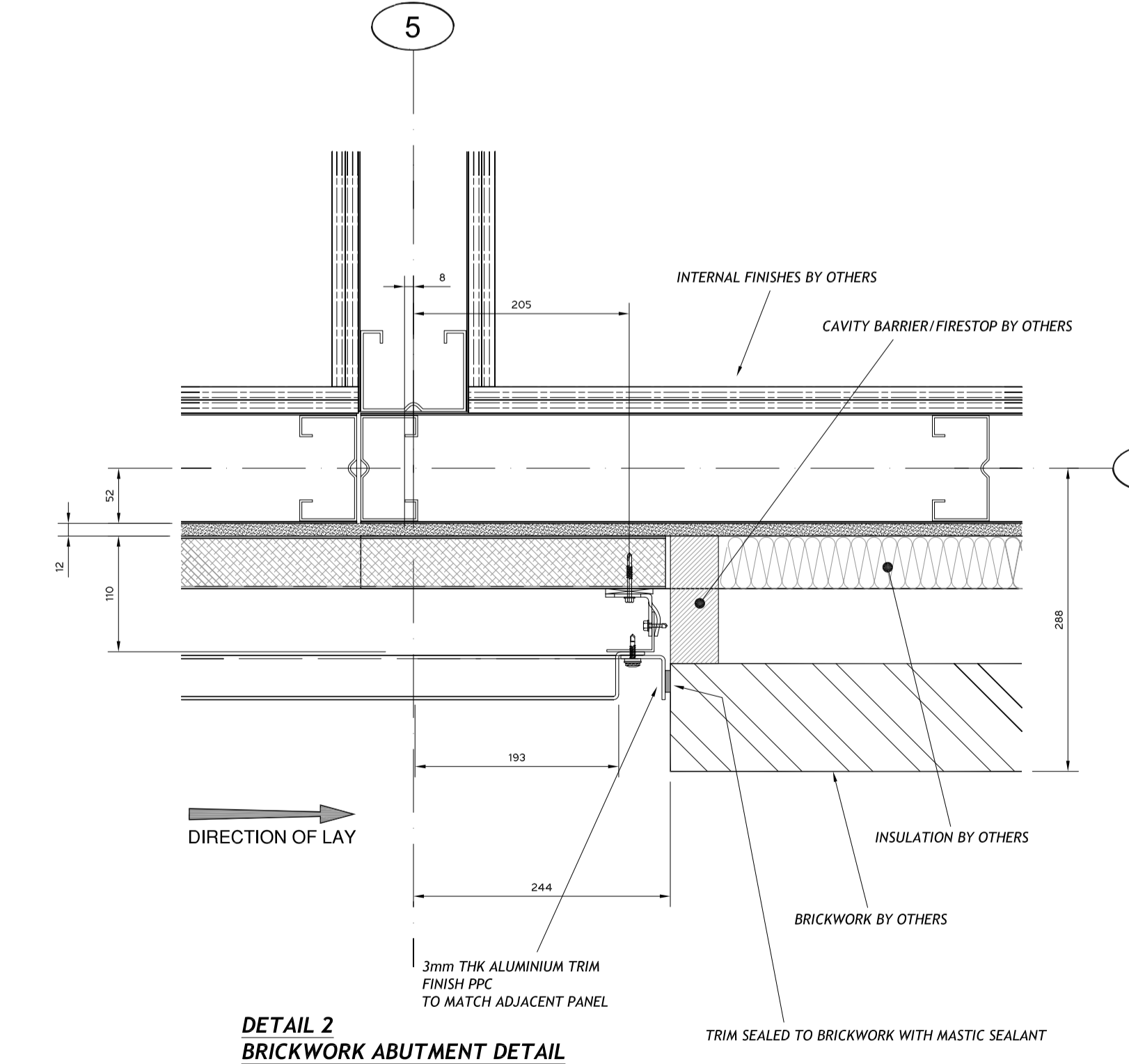
**DETAIL 4  
EXTERNAL CORNER**



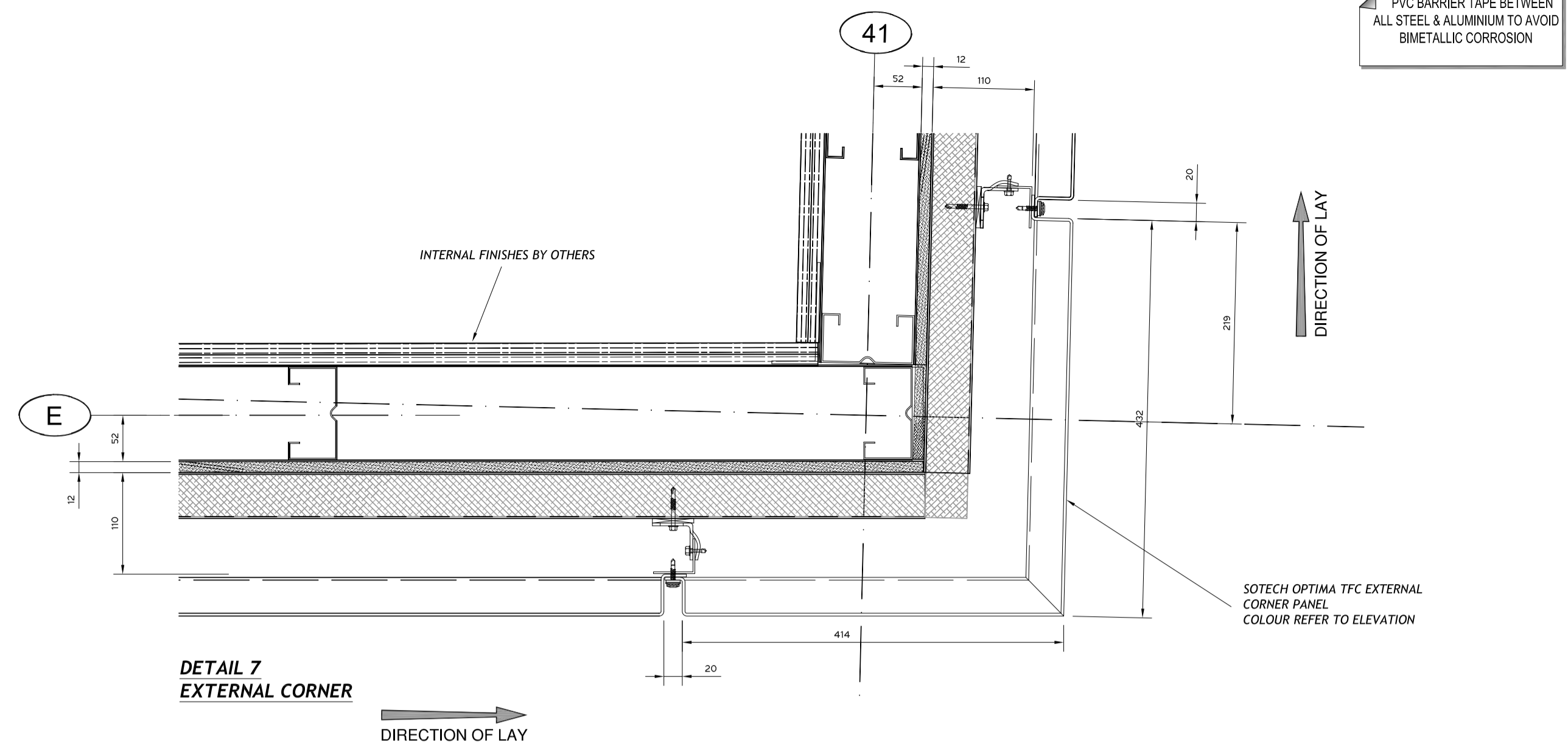
**DETAIL 1  
EXTERNAL CORNER**



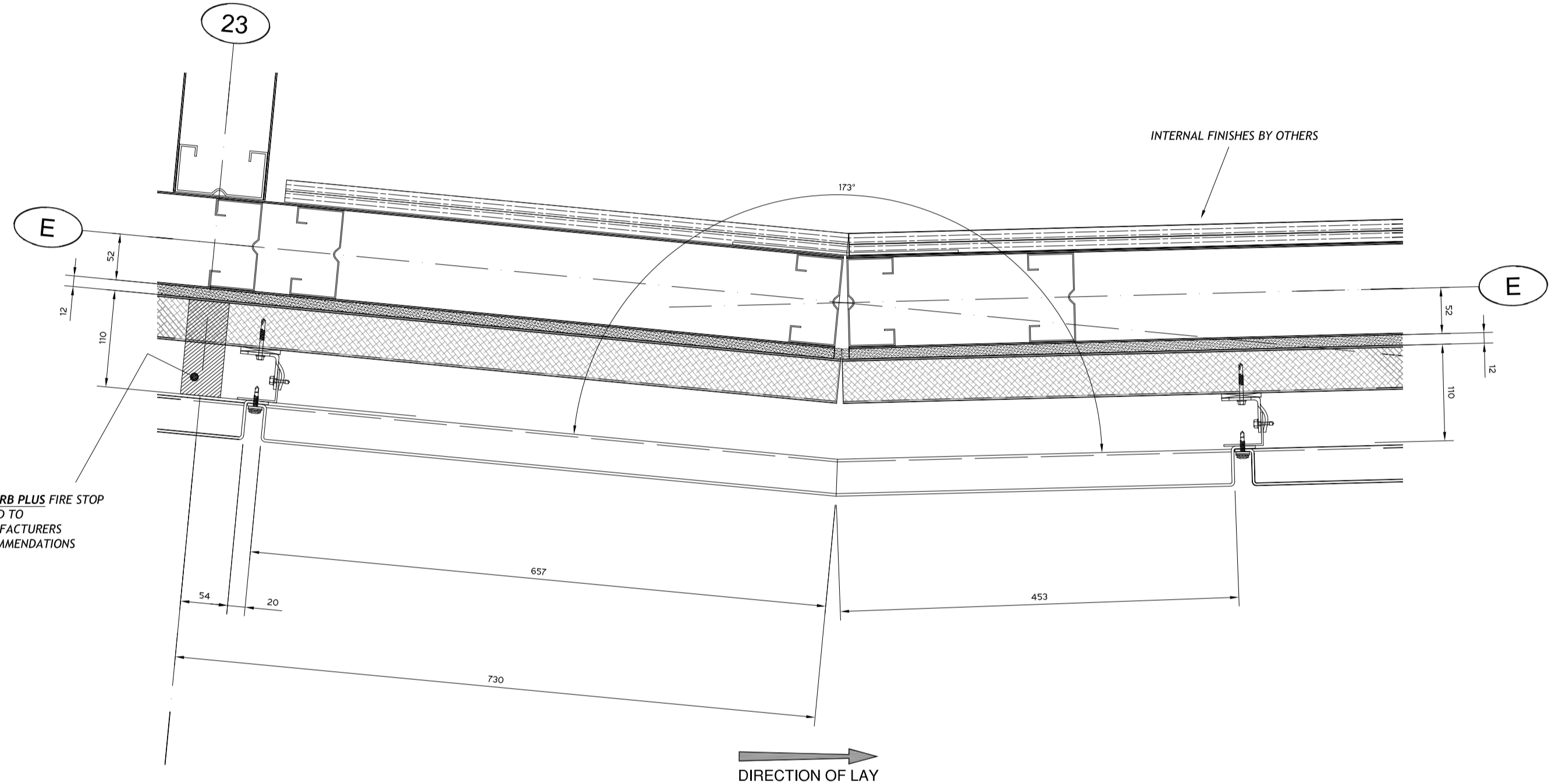
**DETAIL 5  
BRICKWORK ABUTMENT DETAIL**



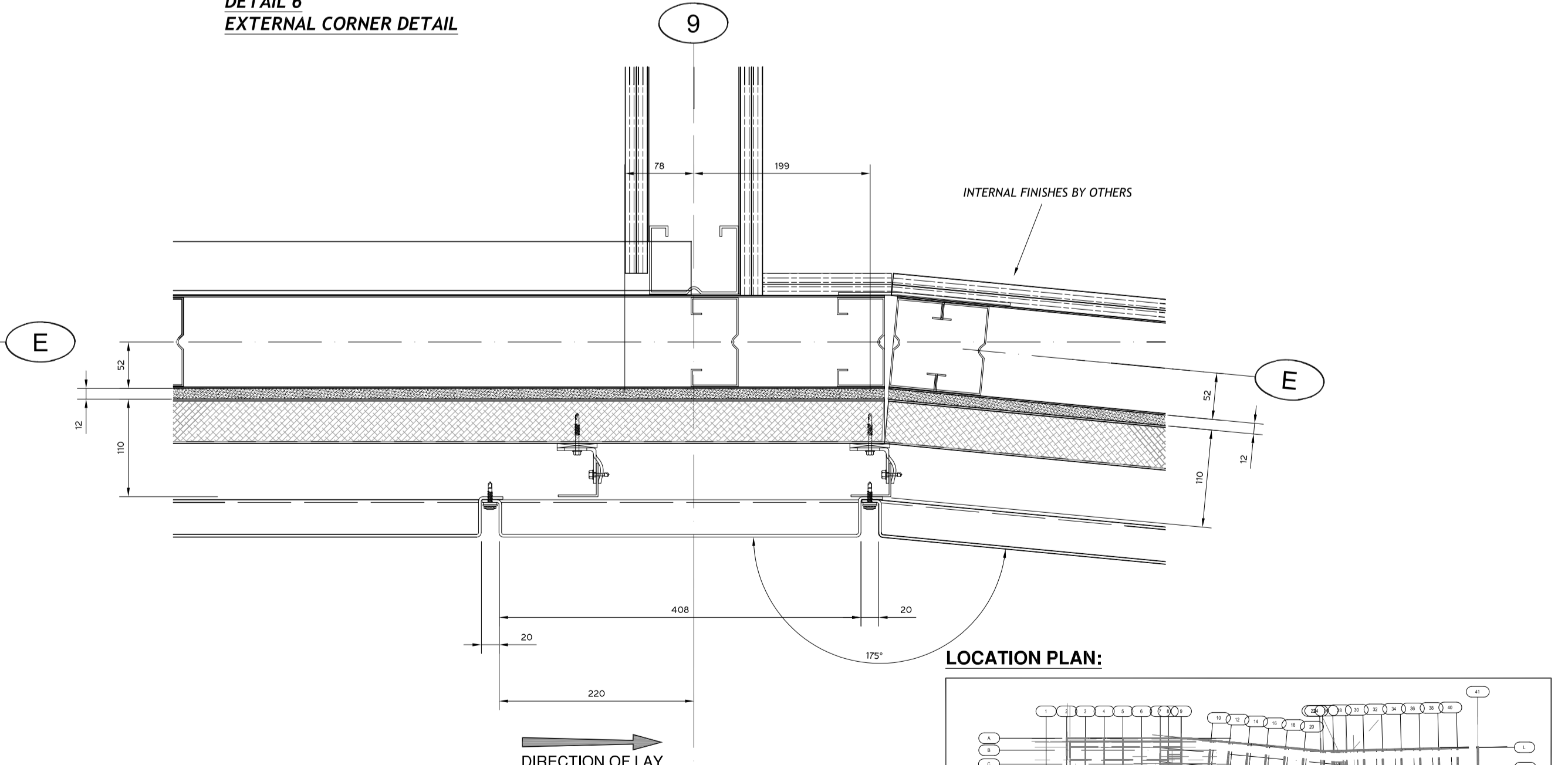
**DETAIL 2  
BRICKWORK ABUTMENT DETAIL**



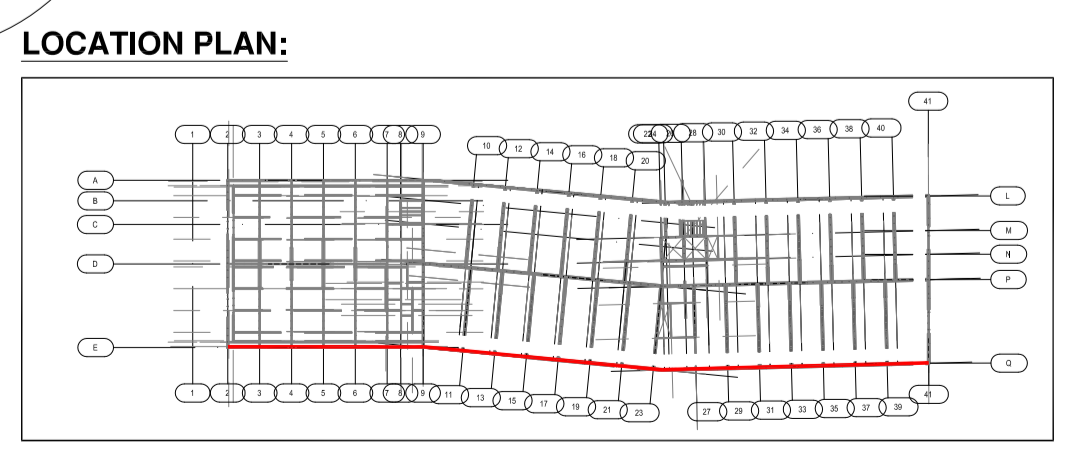
**DETAIL 7  
EXTERNAL CORNER**



**DETAIL 6  
EXTERNAL CORNER DETAIL**



**DETAIL 3  
INTERNAL CORNER DETAIL**



REVISION / AUTHOR / CHECKER	C3 - INSULATION AND MEMBRANE REVISED - 27 SEP 17	PL	PL	DRAWN BY: <b>PL</b>	PROJECT TITLE: <b>STUDENT ACCOMODATION - AGARD St</b>	STATUS: <b>CONSTRUCTION</b>
	C2 - REVISED TO COMMENTS - 01 JUNE 17	PL	PL			
	C1 - ISSUED FOR CONSTRUCTION - 10 MAY 17	PL	PL			
	P1 - ISSUED FOR APPROVAL - 06 APR 17	PL	PL			
SCALE @ A1: <b>1:100</b>			DRAWING TITLE: <b>EAST ELEVATION PLAN DETAILS</b>		REV: <b>C3</b>	DRAWING NO: <b>396-(PL)-001</b>